

KA4C 2390.4/4

WIRING DIAGRAM

Project		Technical Data	
Order	OVF2600069-1000	Operating Voltage	400 [Vac]
Customer order	24118 rev7	Low-Voltage	24 [Vac]
Item Code	00C0011892-20	Frequence	50 [Hz]
Description	KA4C2390.4/ 4	Total Current	24 [A]
Electrical Drawing	E0C0011892-20	Total Power supply	14,6 [kW]
Date	23/02/2026		
		Protection class	IP55

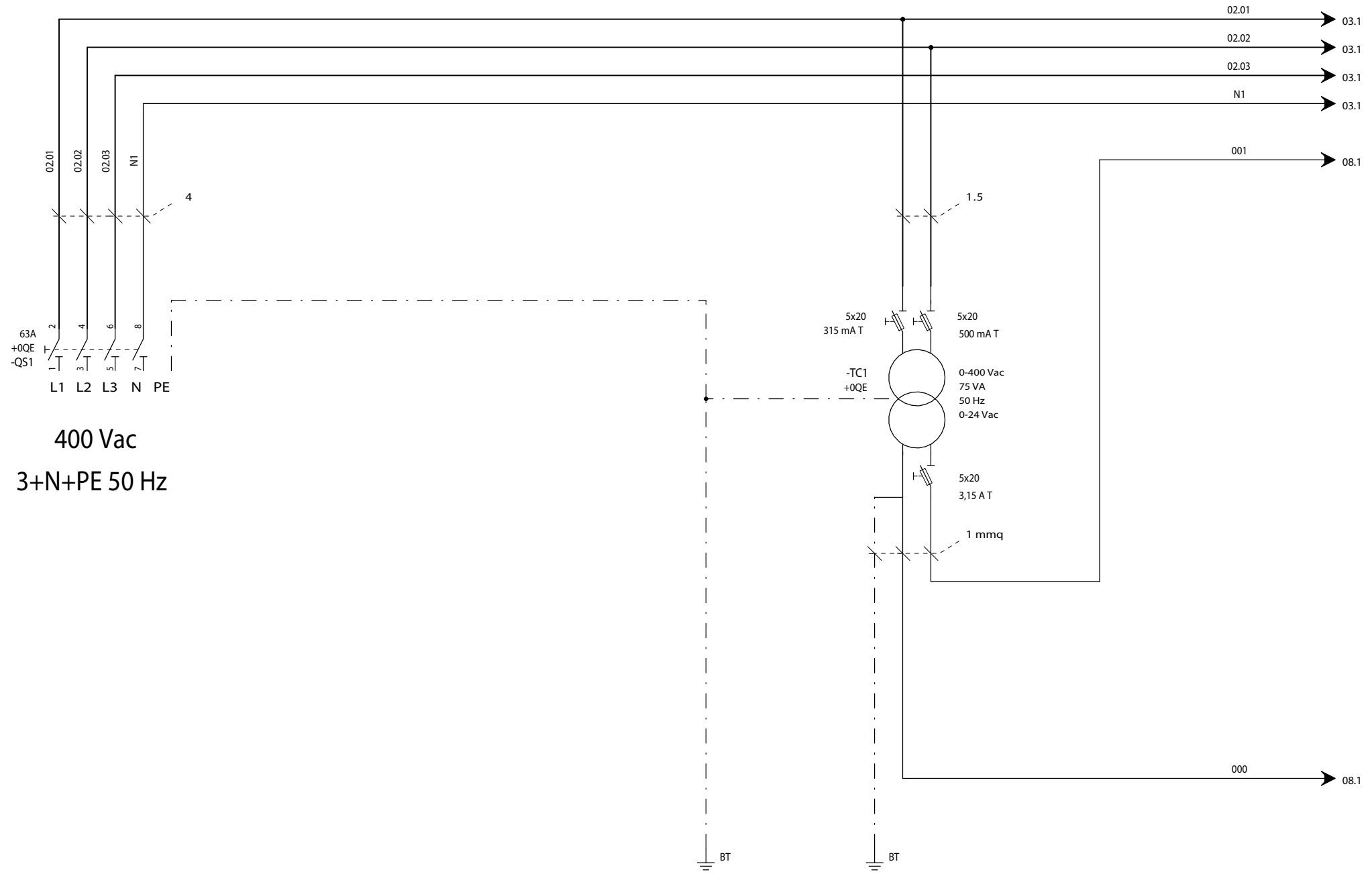
Comments Power line protections must be provided by the user as provided by regulations in force at the place of installation.

An differential circuit breaker mounted before this switchboard is recommended for proper installation in TN and TT system as per EN 6024-01, the PE conductor must be earthed.

In IT systems, the unit must be protected by the customer against indirect contact by continuous insulation monitoring device as per IEC60364-4-41.

0			23/02/2026	A B	A G
Review	Modifications		Date	Prepared	Verified

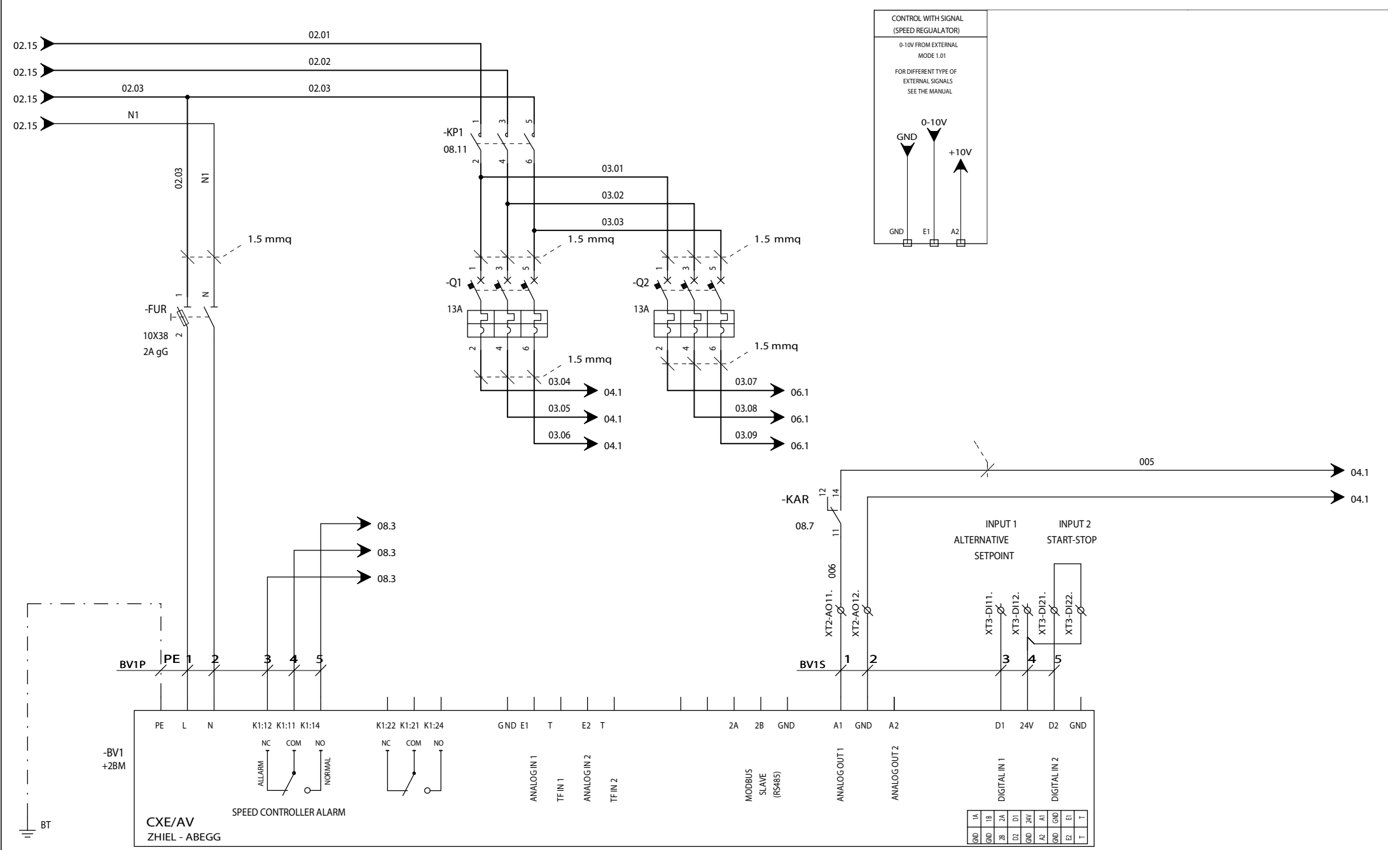
IT IS FORBIDDEN TO HAND IN THIS DOCUMENT TO THIRD PARTIES, TO COPY IT, TO MAKE USE OF ITS CONTENTS AND TO DISCLOSE IT TO THIRD PARTIES WITHOUT OUR EXPLICIT AUTHORIZATION. A COMPENSATION FOR THE DAMAGES OCCURRED WILL BE ASKED FOR EVERY INFRACTION.ALL RIGHTS ARE RESERVED.



KA4C 2390.4/4

Project : CNEC . U . . 25 . . .06.M2.V400F3H50N		Sheet 02
Internal order : 04804803		Of 17
Customer : 0480	Customer order :	
Title : Power circuit		
Draughtsman : E.A.	Date : 12/09/2013	01 ◀ ▶ 03

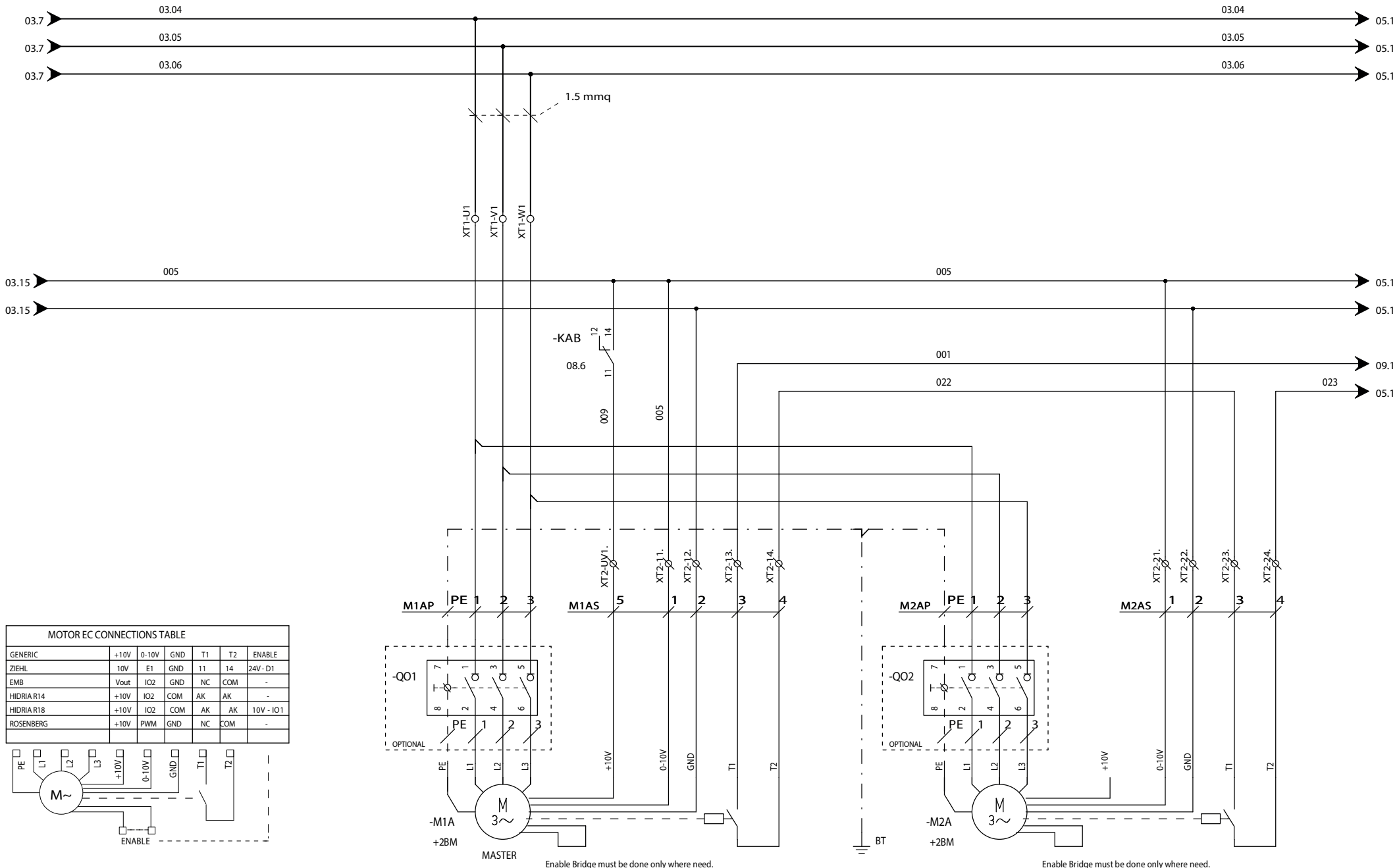
Rev.	Date	Signat.	Modification



Rev.	Date	Signat.	Modification

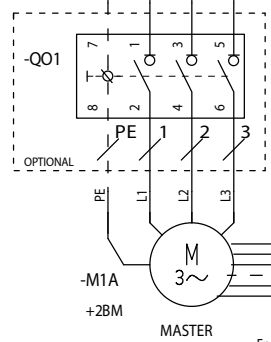
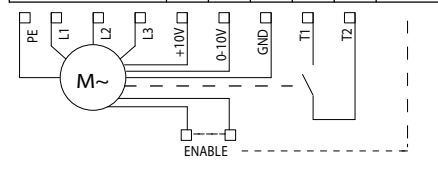
KA4C 2390.4/4

Project : CNEC . U . . 25 . . .06.M2.V400F3H50N		Sheet 03
Internal order : 04804803		Of 17
Customer : 0480	Customer order :	02 ◀▶ 04
Title : Power circuit		
Draughtsman : E.A.		Date : 12/09/2013

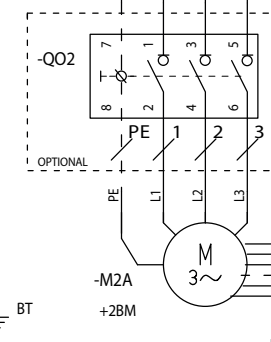


MOTOR EC CONNECTIONS TABLE

GENERIC	+10V	0-10V	GND	T1	T2	ENABLE
ZIEHL	10V	E1	GND	11	14	24V-D1
EMB	Vout	IO2	GND	NC	COM	-
HIDRIA R14	+10V	IO2	COM	AK	AK	-
HIDRIA R18	+10V	IO2	COM	AK	AK	10V - IO1
ROSENBERG	+10V	PWM	GND	NC	COM	-



Enable Bridge must be done only where need.

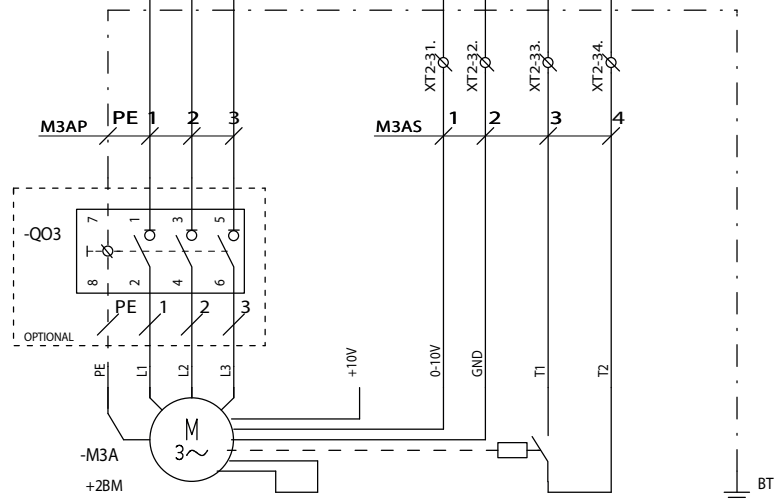
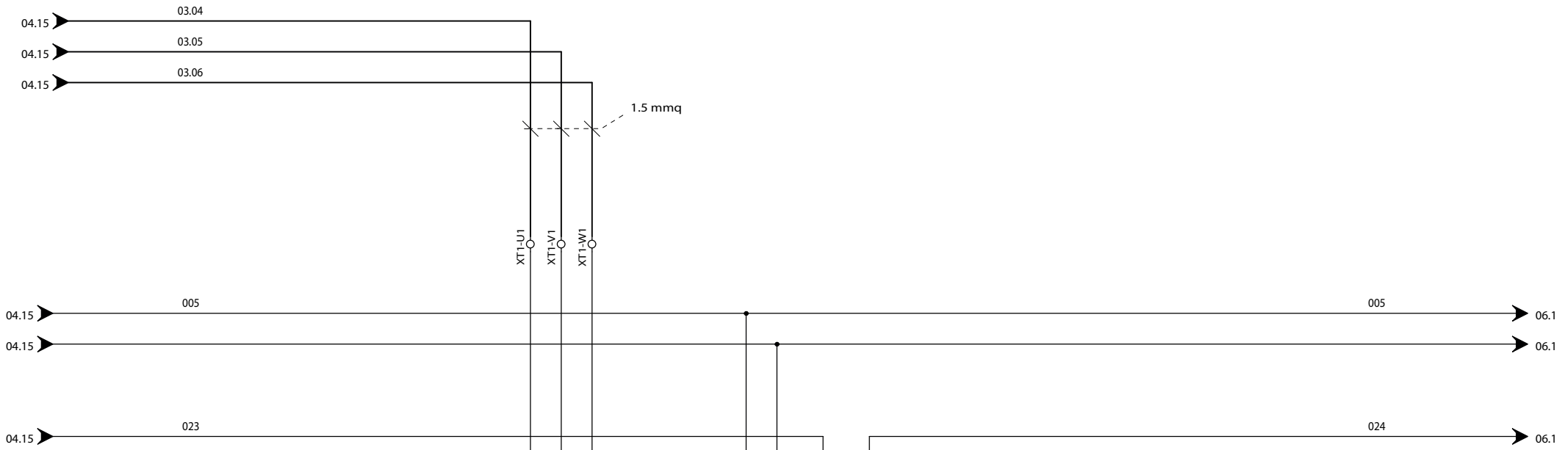


Enable Bridge must be done only where need.

Rev.	Date	Signat.	Modification

KA4C 2390.4/4

Project : CNEC . U . . 25 . . .06.M2.V400F3H50N	
Internal order : 04804803	
Customer : 0480	Customer order :
Title : Power circuit	
Draughtsman : E.A.	Date : 12/09/2013

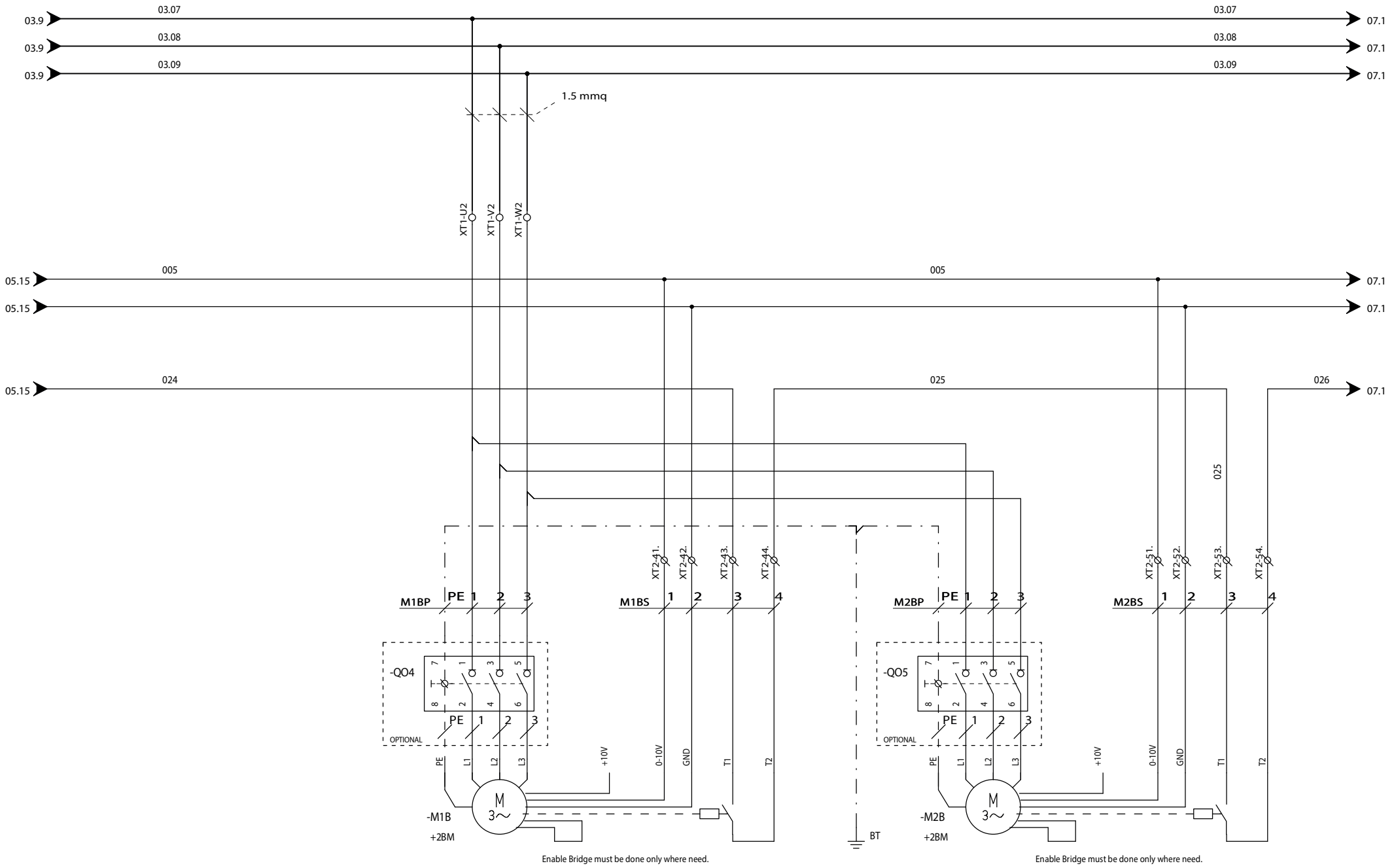


Enable Bridge must be done only where need.

Rev.	Date	Signat.	Modification

KA4C 2390.4/4

Project : CNEC . U . . 25 . . .06.M2.V400F3H50N	
Internal order :	04804803
Customer : 0480	Customer order :
Title : Power circuit	
Draughtsman : E.A.	Date : 12/09/2013



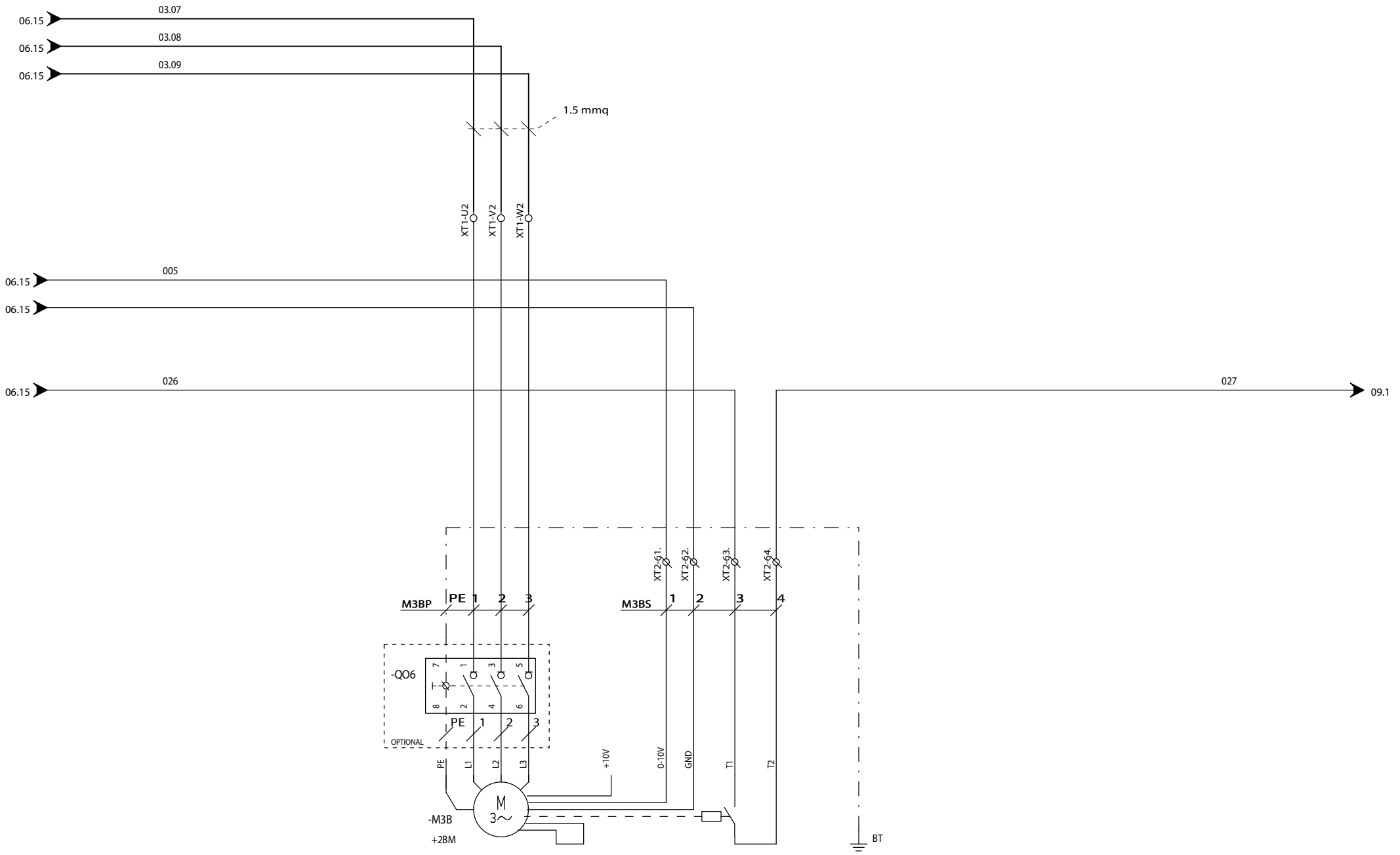
Enable Bridge must be done only where need.

Enable Bridge must be done only where need.

Rev.	Date	Signat.	Modification

KA4C 2390.4/4

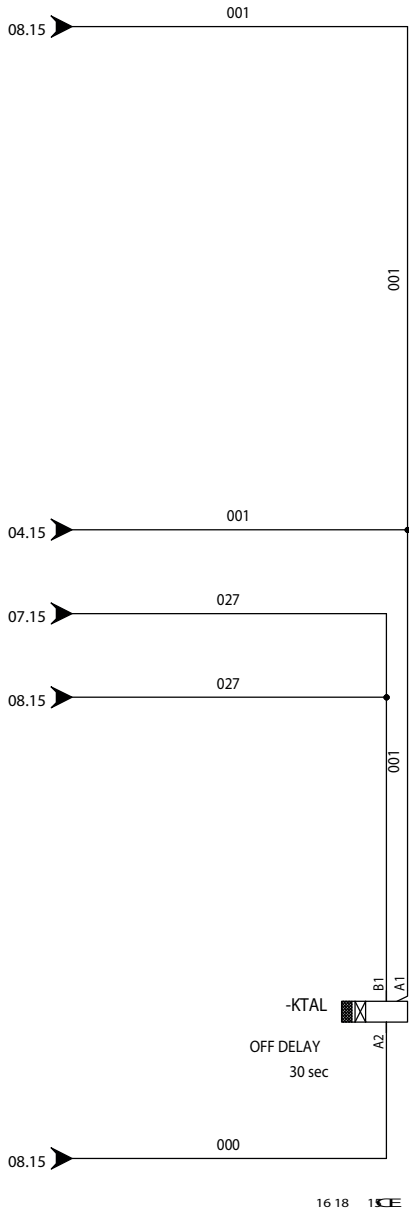
Project : CNEC . U . . 25 . . .06.M2.V400F3H50N	
Internal order :	04804803
Customer : 0480	Customer order :
Title : Power circuit	
Draughtsman : E.A.	Date : 12/09/2013



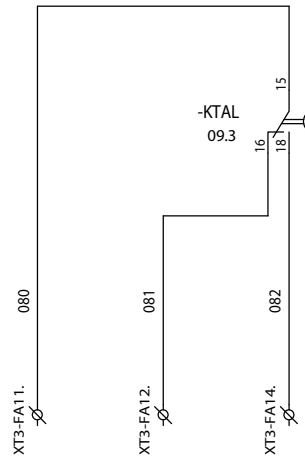
Rev.	Date	Signat.	Modification

KA4C 2390.4/4

Project : CNEC . U . . 25 . . .06.M2.V400F3H50N		Sheet 07
Internal order : 04804803		Of 17
Customer : 0480	Customer order :	06 ◀▶ 08
Title : Power circuit		
Draughtsman : E.A.		Date : 12/09/2013



16 18 13 E 09.9



FANS
ALARM

KA4C 2390.4/4

Project : CNEC . U . . 25 . . .06.M2.V400F3H50N	
Internal order : 04804803	
Customer : 0480	Customer order :
Title : Control circuit	
Draughtsman : E.A.	
Date : 12/09/2013	

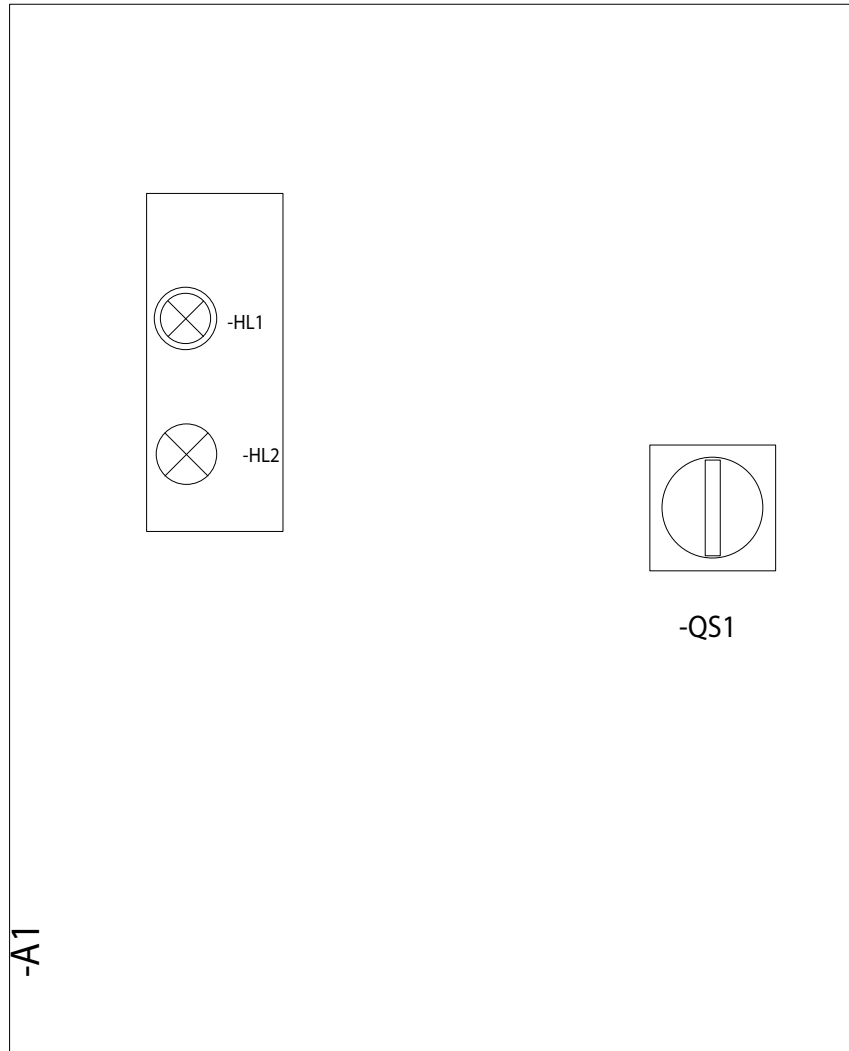
Sheet 09

Of 17

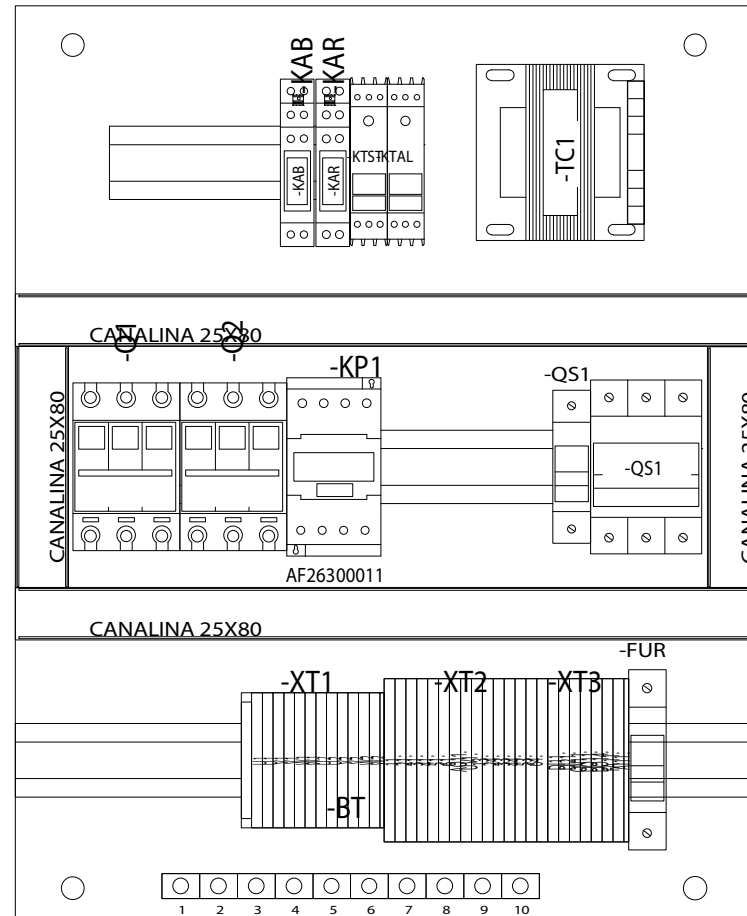
08 ◀▶ 10

Rev.	Date	Signat.	Modification

DIMENSIONS: 405X500X200



DOOR



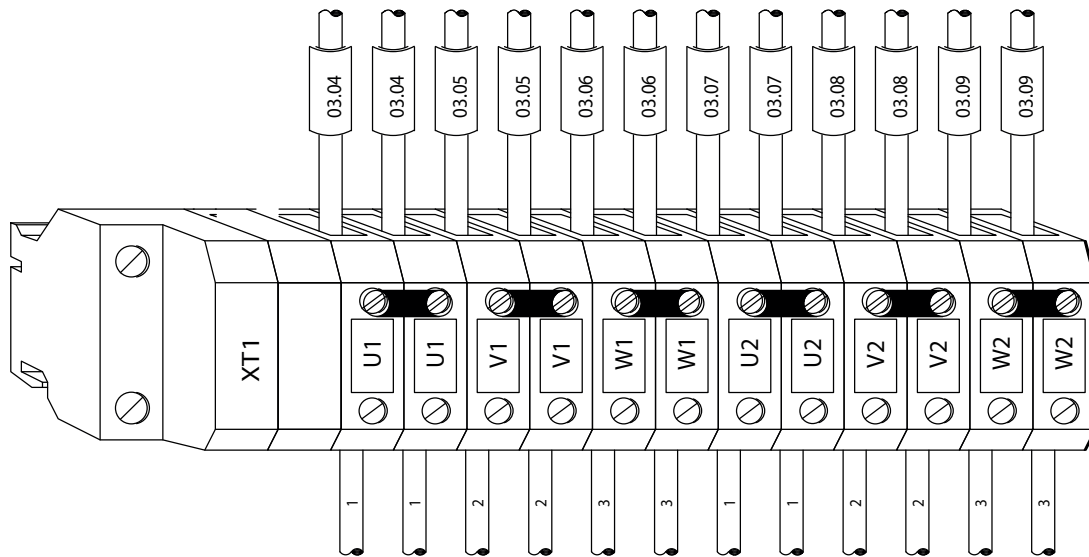
ELECTRICALBOARD PLATE

KA4C 2390.4/4

Project:	CNEC . U . . 25 . . .06.M2.V400F3H50N
Internal order:	04804803
Customer:	0480
Customer order:	
Title:	Layout
Draughtsman:	E.A.
Date:	12/09/2013

Sheet	10
Of	17
09 ◀▶	

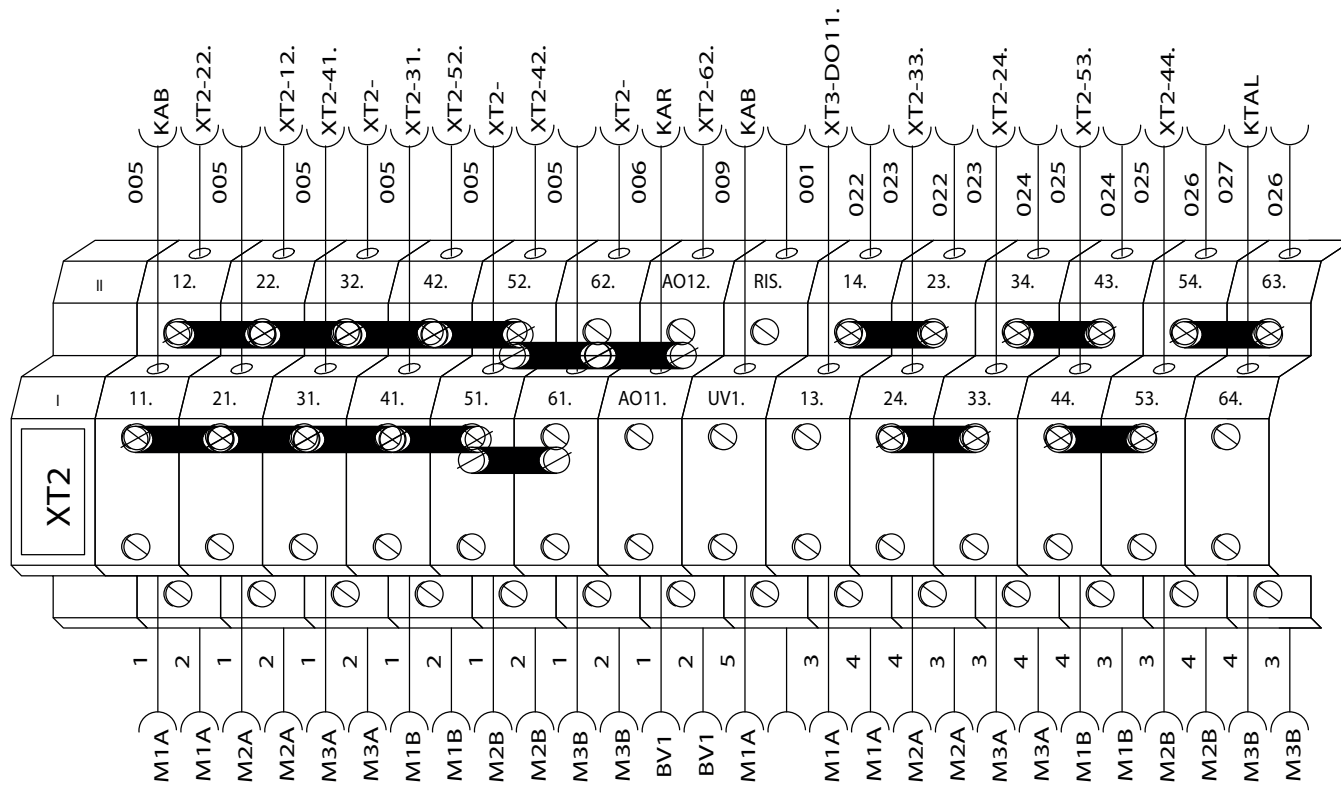
Rev.	Date	Signat.	Modification



KA4C 2390.4/4

Project : CNEC . U . . 25 . . .06.M2.V400F3H50N		Sheet 11
Internal order : 04804803		
Customer : 0480	Customer order :	Of 17
Title : Terminal board: XT1		◀▶ 12
Draughtsman : E.A.	Date : 12/09/2013	

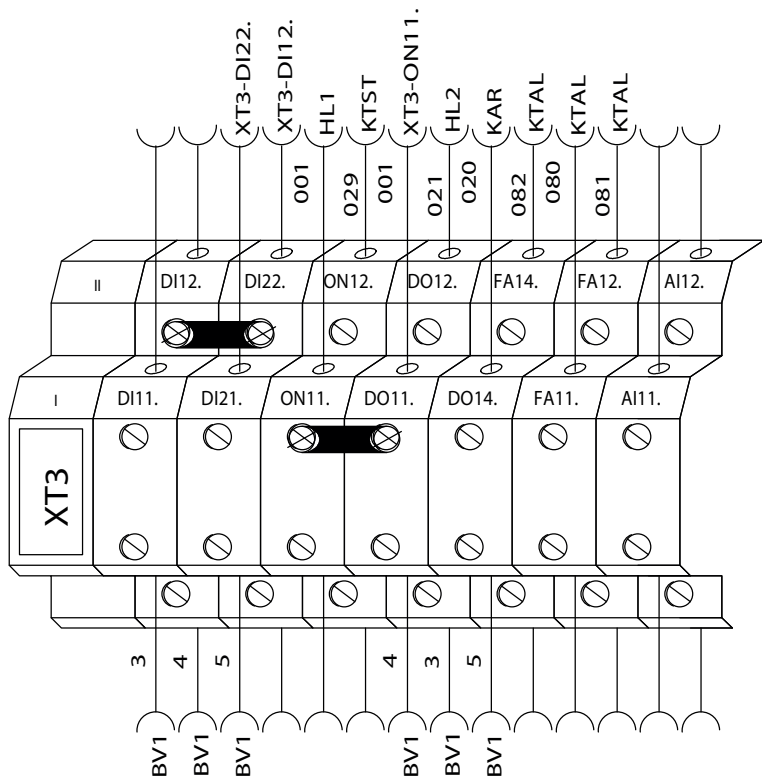
Rev.	Date	Signat.	Modification



KA4C 2390.4/4

Project : CNEC . U . . 25 . . .06.M2.V400F3H50N	
Internal order : 04804803	
Customer : 0480	Customer order :
Title : Terminal board: XT2	
Draughtsman : E.A.	Date : 12/09/2013

Rev.	Date	Signat.	Modification

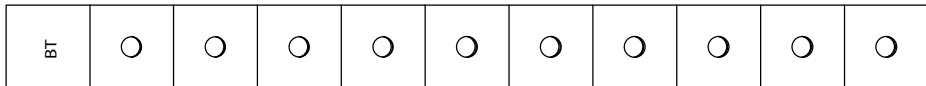


KA4C 2390.4/4

Project : CNEC . U . . 25 . . .06.M2.V400F3H50N	
Internal order : 04804803	
Customer : 0480	Customer order :
Title : Terminal board: XT3	
Draughtsman : E.A.	Date : 12/09/2013

Sheet	13
Of	17
12 ◀▶ 14	

Rev.	Date	Signat.	Modification



.....

Rev.	Date	Signat.	Modification

KA4C 2390.4/4

Project :	CNEC . U . . 25 . . .06.M2.V400F3H50N	
Internal order :	04804803	
Customer :	0480	Customer order :
Title :	Terminal board: BT	
Draughtsman :	E.A.	Date :
		12/09/2013

PARTS LIST

Sigla	Descrizione	Codice	Costruttore	Ubicazione	Quantità	Funzione	Posizione
A1	ELECTRICAL BOX 500X405X200	GW46003	GEWISS	0QE	1		10.1
BV1	SPEED CONTROLLER	CXE/AVC Art.320053 IP54	ZIEHL-ABEGG	2BM	1		03.2
BV1	TEMPERATURE PROBE	IKE_38XE25006X05X	ITALCOPPIE	2BM	1		03.2
FUR	E91HN/32	M200913	ABB	0QE	1		03.3
FUR	FUSE 10X38 2 A GG	10X38-GG2A	FUSIBILE	0QE	2		03.3
HL1	GREEN SIGNAL LAMP	800FM-P3	ALLEN BRADLEY	0QE	1		08.2
HL1	THREE ELEMENTS SUPPORT	800F-ALP	ALLEN BRADLEY	0QE	1		08.2
HL1	24VAC/DC GREEN LED	800F-Q3G	ALLEN BRADLEY	0QE	1		08.2
HL2	24VAC/DC RED LED	800F-Q3R	ALLEN BRADLEY	0QE	1		08.5
HL2	RED SIGNAL LAMP	800FM-P4	ALLEN BRADLEY	0QE	1		08.5
HL2	THREE ELEMENTS SUPPORT	800F-ALP	ALLEN BRADLEY	0QE	1		08.5
KAB	RELAY-HOLDER	95P5SMA	FINDER	0QE	1		08.6
KAB	2 CONTACTS RELAY 24Vac	405280240000	FINDER	0QE	1		08.6
KAR	RELAY-HOLDER	95P5SMA	FINDER	0QE	1		08.7
KAR	2 CONTACTS RELAY 24Vac	405280240000	FINDER	0QE	1		08.7
KP1	AF26-30-00-11 CONT 3P 26A 24-60V AC/DC	AF26300011	ABB	0QE	1		08.11
KTAL	E234CT-MFD MULTIFUNCTION TIMER	EA6807	ABB	0QE	1		09.3
KTST	E234CT-MFD MULTIFUNCTION TIMER	EA6807	ABB	0QE	1		08.9
Q1	S203 C13 CIRCUIT BREAKER 6KA 3P	S467902	ABB	0QE	1		03.6
Q2	S203 C13 CIRCUIT BREAKER 6KA 3P	S467902	ABB	0QE	1		03.8
QS1	MAIN SWITCH 63A 3P	EE2612	ABB	0QE	1		02.2
QS1	YELLOW/RED PADLOCKABLE HANDLE	EE3131	ABB	0QE	1		02.2
QS1	FOURTH POLE SWITCH 80A	EE3354	ABB	0QE	1		02.2
QS1	STEEL STIRRUPS	GW46451	GEWISS	0QE	1		02.2
QS1	SHAFT 5X250MM	EE3255	ABB	0QE	1		02.2
TC1	TM 75VA f0-f230-f400/0-f24V	075FCB	BOTTER	0QE	1		02.11
TC1	FUSE 5X20 315mA T	5X20-T315MA	FUSIBILE	0QE	1		02.11
TC1	FUSE 5X20 3,15A T	5X20-T3,15A	FUSIBILE	0QE	1		02.11
TC1	FUSE 5X20 500mA T	5X20-T500MA	FUSIBILE	0QE	1		02.11

Rev.	Date	Signat.	Modification

KA4C 2390.4/4

Project : CNEC . U . . 25 . . .06.M2.V400F3H50N		Sheet 15
Internal order : 04804803		Of 17
Customer : 0480	Customer order :	◀▶ 16
Title : Part list		
Draughtsman : E.A.		Date : 12/09/2013

TERMINAL BOARD LIST

Identification	Description	Code	Manufacturer	Location	Amount	Position
BT-1	GROUND BAR	04180095	CON	0QE	1	14.3
BT-10	GROUND BAR	04180095	CON	0QE	1	14.8
BT-2	GROUND BAR	04180095	CON	0QE	1	14.3
BT-3	GROUND BAR	04180095	CON	0QE	1	14.4
BT-4	GROUND BAR	04180095	CON	0QE	1	14.4
BT-5	GROUND BAR	04180095	CON	0QE	1	14.5
BT-6	GROUND BAR	04180095	CON	0QE	1	14.5
BT-7	GROUND BAR	04180095	CON	0QE	1	14.6
BT-8	GROUND BAR	04180095	CON	0QE	1	14.7
BT-9	GROUND BAR	04180095	CON	0QE	1	14.7
P1	FBS 2,5 BRIDGE 2	3030161	PHOENIX	0QE	1	11.4
P10	FBS 2,5 BRIDGE 2	3030161	PHOENIX	0QE	1	13.3
P11	FBS 2,5 BRIDGE 2	3030161	PHOENIX	0QE	1	12.9
P12	FBS 2,5 BRIDGE 2	3030161	PHOENIX	0QE	1	12.7
P13	FBS 2,5 BRIDGE 2	3030161	PHOENIX	0QE	1	12.8
P14	FBS 2,5 BRIDGE 2	3030161	PHOENIX	0QE	1	12.4
P15	FBS 2,5 BRIDGE 3	3030174	PHOENIX	0QE	1	12.5
P16	FBS 2,5 BRIDGE 5	3030190	PHOENIX	0QE	1	12.2
P17	FBS 2,5 BRIDGE 5	3030190	PHOENIX	0QE	1	12.2
P2	FBS 2,5 BRIDGE 2	3030161	PHOENIX	0QE	1	11.4
P3	FBS 2,5 BRIDGE 2	3030161	PHOENIX	0QE	1	11.5
P4	FBS 2,5 BRIDGE 2	3030161	PHOENIX	0QE	1	11.6
P5	FBS 2,5 BRIDGE 2	3030161	PHOENIX	0QE	1	11.7
P6	FBS 2,5 BRIDGE 2	3030161	PHOENIX	0QE	1	11.8
P7	FBS 2,5 BRIDGE 2	3030161	PHOENIX	0QE	1	12.7
P8	FBS 2,5 BRIDGE 2	3030161	PHOENIX	0QE	1	12.8
P9	FBS 2,5 BRIDGE 2	3030161	PHOENIX	0QE	1	13.2
XT1-	CLIP FIX	3022276	PHOENIX	0QE	1	11.3
XT1-	D-ST 2,5 TWIN	3030488	PHOENIX	0QE	1	11.8
XT1-U1	ST 2,5 TWIN	3031241	PHOENIX	0QE	1	11.3
XT1-U1	ST 2,5 TWIN	3031241	PHOENIX	0QE	1	11.4
XT1-U2	ST 2,5 TWIN	3031241	PHOENIX	0QE	1	11.6
XT1-V1	ST 2,5 TWIN	3031241	PHOENIX	0QE	1	11.4
XT1-V1	ST 2,5 TWIN	3031241	PHOENIX	0QE	1	11.5
XT1-V2	ST 2,5 TWIN	3031241	PHOENIX	0QE	1	11.7
XT1-W1	ST 2,5 TWIN	3031241	PHOENIX	0QE	1	11.5
XT1-W2	ST 2,5 TWIN	3031241	PHOENIX	0QE	1	11.8
XT2-	STTBBS 2,5	3038464	PHOENIX	0QE	1	12.10
XT2-11.	STTBBS 2,5	3038464	PHOENIX	0QE	1	12.2
XT2-13.	STTBBS 2,5	3038464	PHOENIX	0QE	1	12.7

Rev.	Date	Signat.	Modification

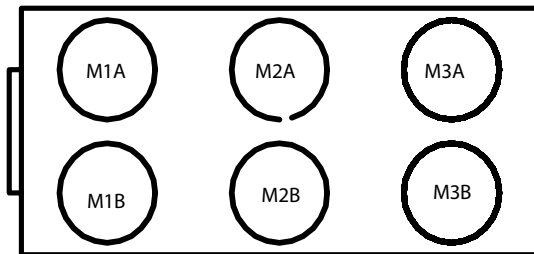
KA4C 2390.4/4

Project : CNEC . U . . 25 . . .06.M2.V400F3H50N		Sheet 16
Internal order : 04804803		
Customer : 0480	Customer order :	Of 17
Title : Terminal board list		
Draughtsman : E.A.		Date : 12/09/2013

COMPONENTS DESCRIPTION

COMPONENT		
Fan	Qty:	6
Model	ZIEHL-ABEGG	
3504332 AssVGB Z-HC90TC75 (3501379 AssVG)		
NOMINAL DATA 1 Fan		WORKING POINT DATA 6 Fans
Frequence	50/60 [Hz]	
Vn	400 [Vac]	Reg.% 94
In	3.6 [A]	Ib 20.2 [A]
Pn	2.3 [kW]	Pb 13.29 [kW]
Cos(φ)	0.92	Cos(φ) 0.96
Fan speed	1020 [rpm]	UpM 959 [rpm]
Tcr	-25\$75 [°C]	
Protection class	IP55	

LAYOUT



KA4C 2390.4/4